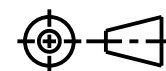


HGL DIMENSIONAL SALES DRAWING

THE COPYRIGHT OF THIS DRAWING BELONGS TO FORTRESS INTERLOCKS Ltd.
THE CONTENT OF THIS DRAWING IS CONFIDENTIAL AND MUST NOT BE
DISCLOSED TO ANY 3rd PARTY WITHOUT SPECIFIC, WRITTEN APPROVAL.

ALL DIMENSIONS
ARE IN mm UNLESS
OTHERWISE STATED



ORIGINAL SIZE
A3

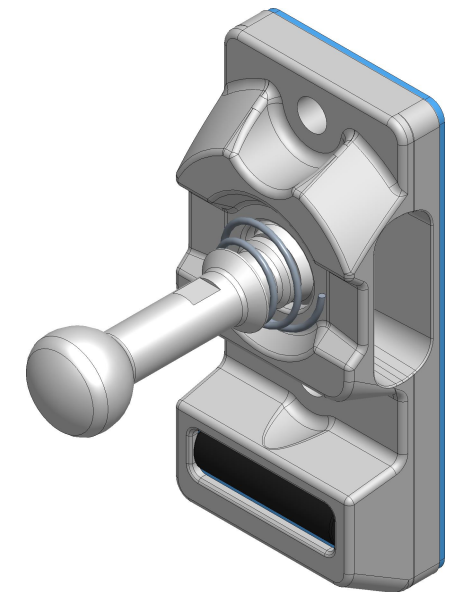
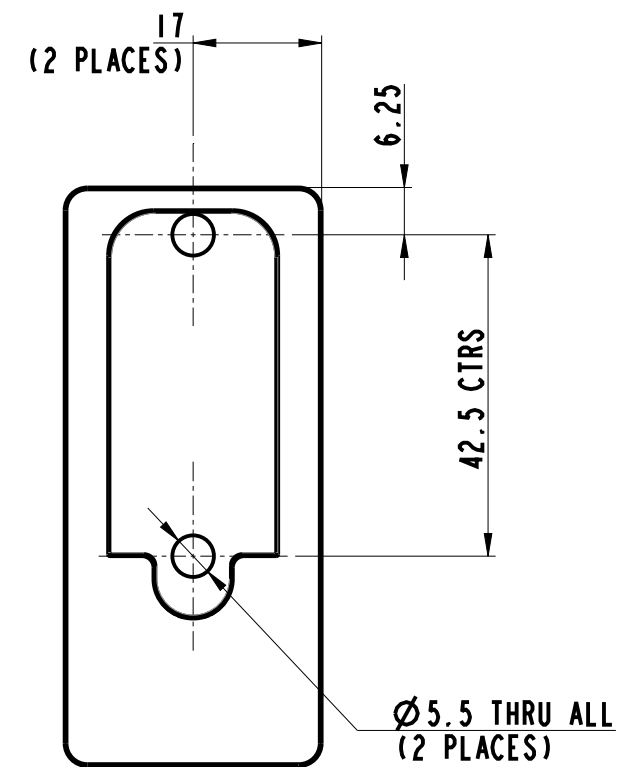
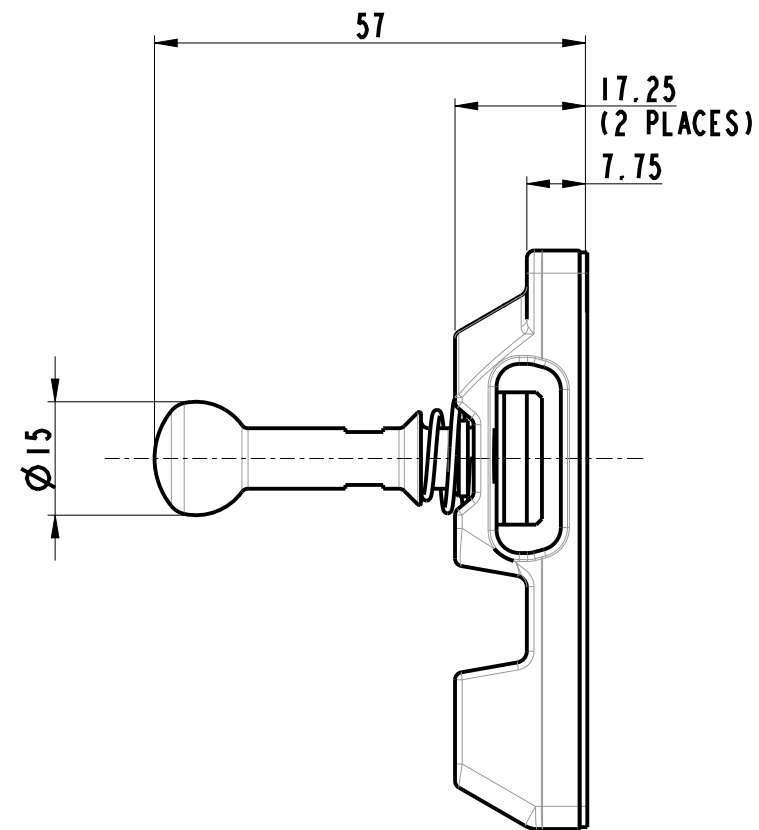
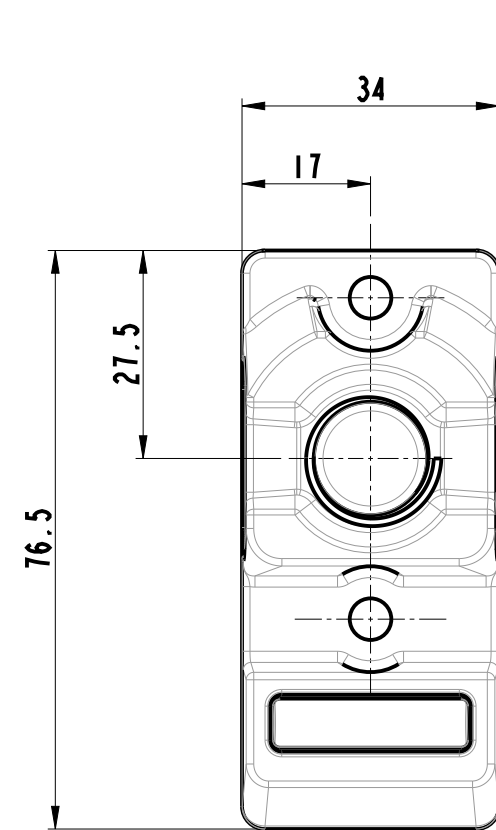
DWG NO: SD-00020

DATE: 07-03-21

ISSUE: 0-B

SCALE: 0.75

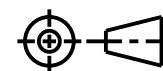
SHEET: 1 OF 3



HGL DIMENSIONAL SALES DRAWING

THE COPYRIGHT OF THIS DRAWING BELONGS TO FORTRESS INTERLOCKS Ltd.
THE CONTENT OF THIS DRAWING IS CONFIDENTIAL AND MUST NOT BE
DISCLOSED TO ANY 3rd PARTY WITHOUT SPECIFIC, WRITTEN APPROVAL.

ALL DIMENSIONS
ARE IN mm UNLESS
OTHERWISE STATED



ORIGINAL SIZE
A3

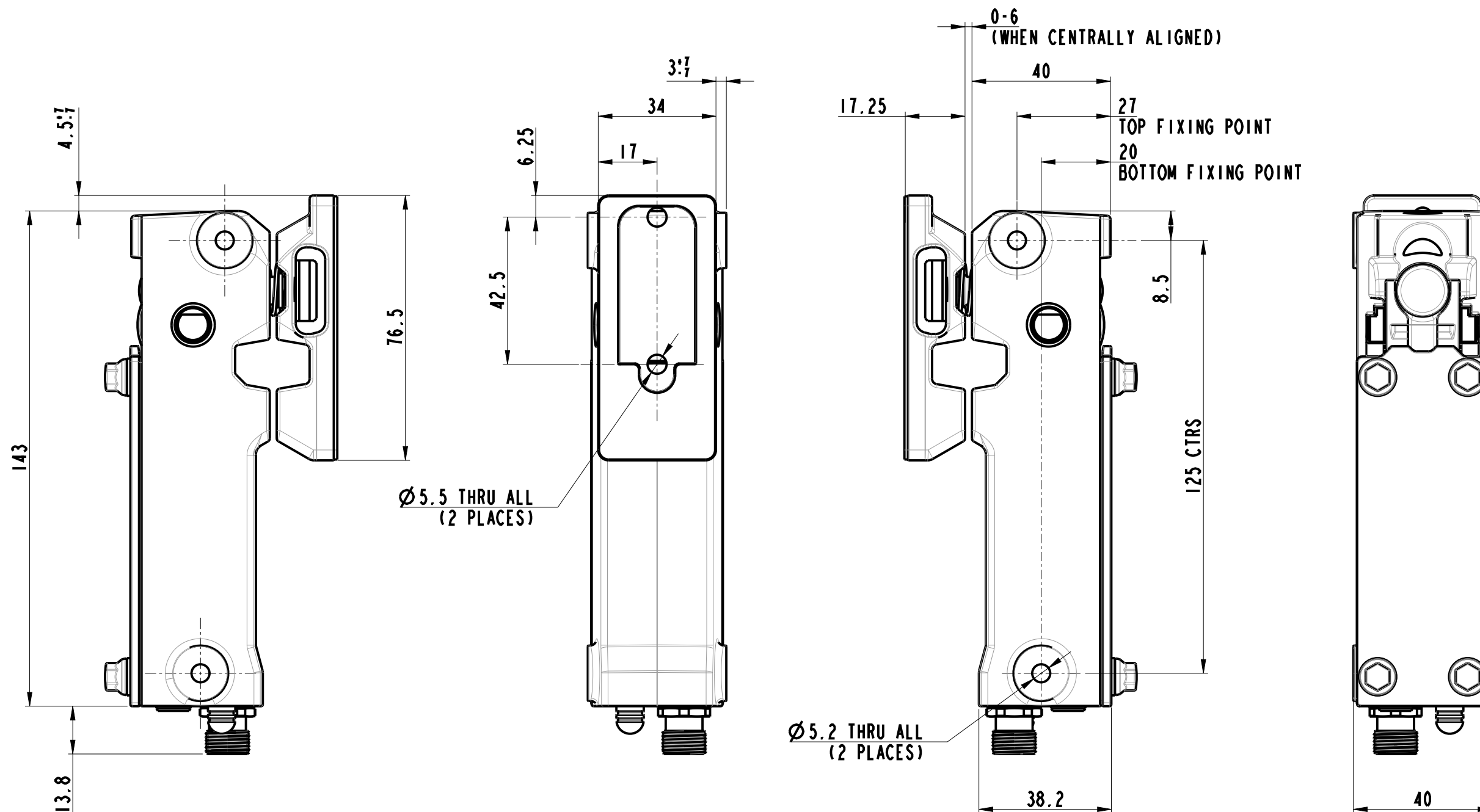
DWG NO: SD-00020

DATE: 07-03-21

ISSUE: 0-B

SCALE: 0.75

SHEET: 2 OF 3



HGL DIMENSIONAL SALES DRAWING

THE COPYRIGHT OF THIS DRAWING BELONGS TO FORTRESS INTERLOCKS Ltd.
THE CONTENT OF THIS DRAWING IS CONFIDENTIAL AND MUST NOT BE
DISCLOSED TO ANY 3rd PARTY WITHOUT SPECIFIC, WRITTEN APPROVAL.

ALL DIMENSIONS
ARE IN mm UNLESS
OTHERWISE STATED



ORIGINAL SIZE
A3

DWG NO: SD-00020

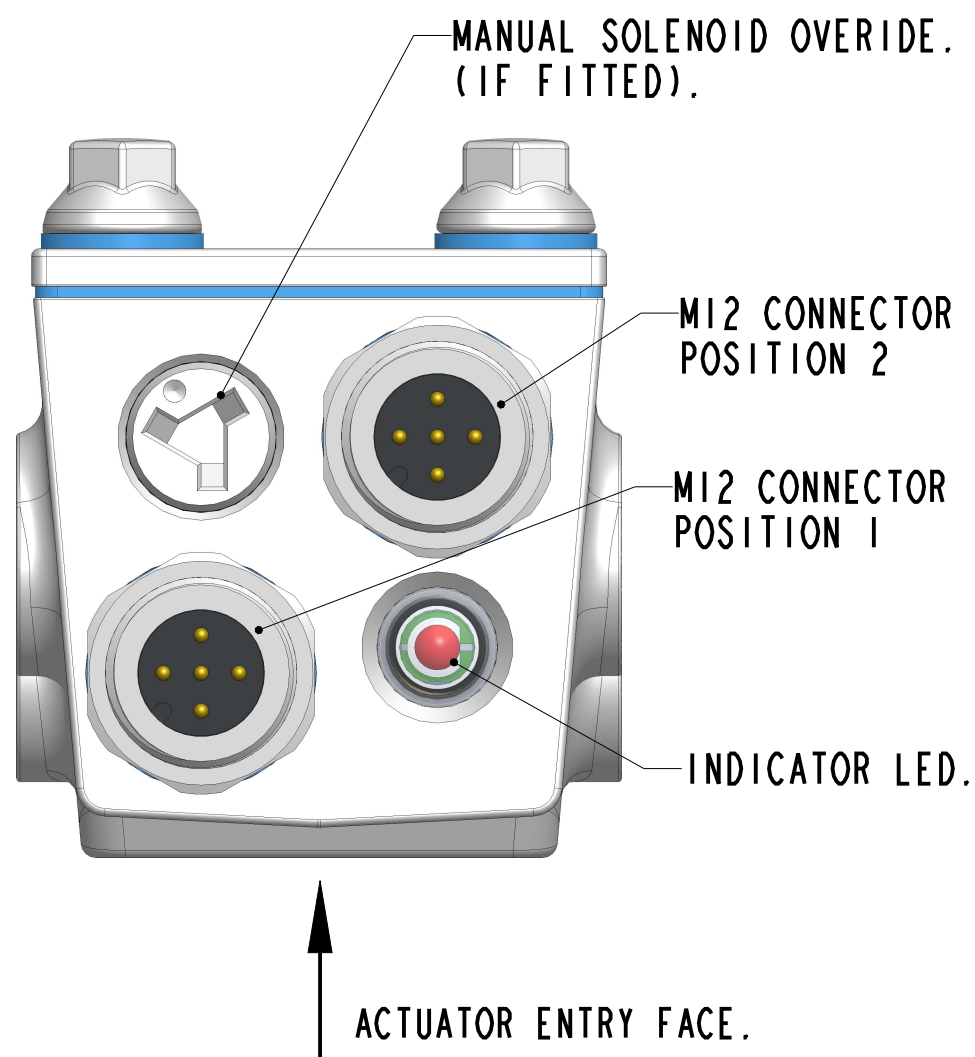
DATE: 07-03-21

ISSUE: 0-B

SCALE: 0.75

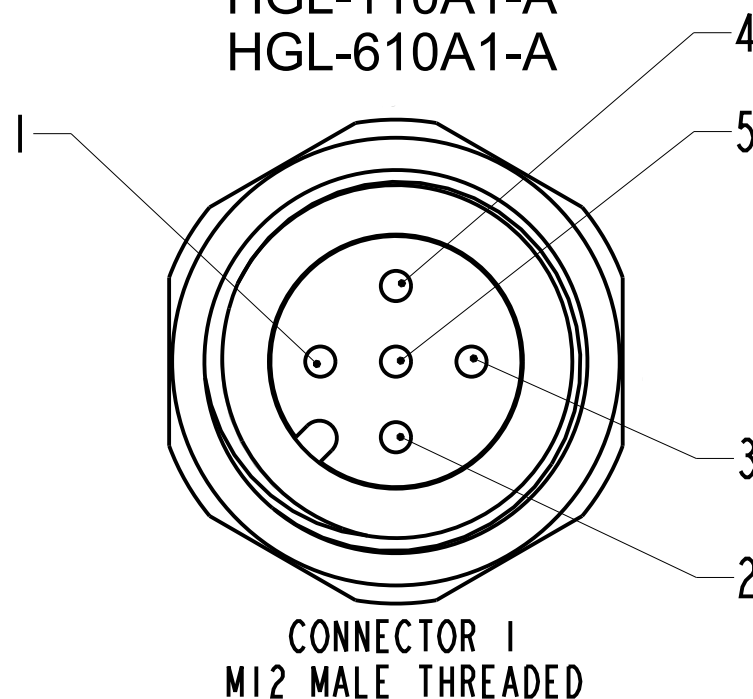
SHEET: 3 OF 3

HGL CONNECTOR POSITIONS



SINGLE 5 PIN M12 CONNECTOR

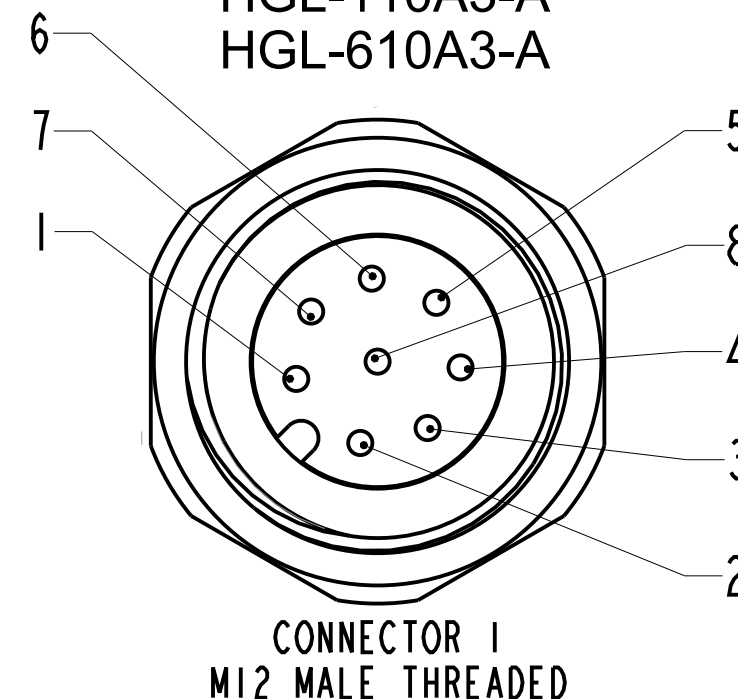
HGL-100A1-A
HGL-110A1-A
HGL-610A1-A



		SIGNAL
CONNECTOR 1 M12 MALE	PIN 1	24V
	PIN 2	OUTPUT 1
	PIN 3	0V
	PIN 4	OUTPUT 2
	PIN 5	SOLENOID DRIVE

SINGLE 8 PIN M12 CONNECTOR

HGL-100A3-A
HGL-110A3-A
HGL-610A3-A

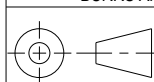


		SIGNAL
CONNECTOR 1 M12 MALE	PIN 1	INPUT 2
	PIN 2	24V
	PIN 3	OUTPUT 1
	PIN 4	OUTPUT 2
	PIN 5	MONITOR
	PIN 6	INPUT 1
	PIN 7	0V
	PIN 8	SOLENOID DRIVE

THE COPYRIGHT OF THIS DRAWING BELONGS TO FORTRESS INTERLOCKS Ltd.
THE CONTENT OF THIS DRAWING IS CONFIDENTIAL AND MUST NOT BE
DISCLOSED TO ANY 3rd PARTY WITHOUT OUR SPECIFIC, WRITTEN APPROVAL.

DO NOT SCALE. IF IN DOUBT ASK!
ALL DIMENSIONS ARE IN mm (UOS)

REMOVE ALL SHARP EDGES,
BURRS AND FLASH



ORIGINAL SIZE
A3

TITLE:

HGL CONNECTOR PIN OUT INFORMATION

DWG NO: T04465_HGL_PIN_OUT_INFO

PART NO: T04465

MATERIAL: UNSPECIFIED

FINISH: UNSPECIFIED

SCALE: 2.00

ISSUE: 0-A

RELEASE LEVEL: Approved For Production

DATE: 07-03-21

DRAWN BY: Stuart Lumsden

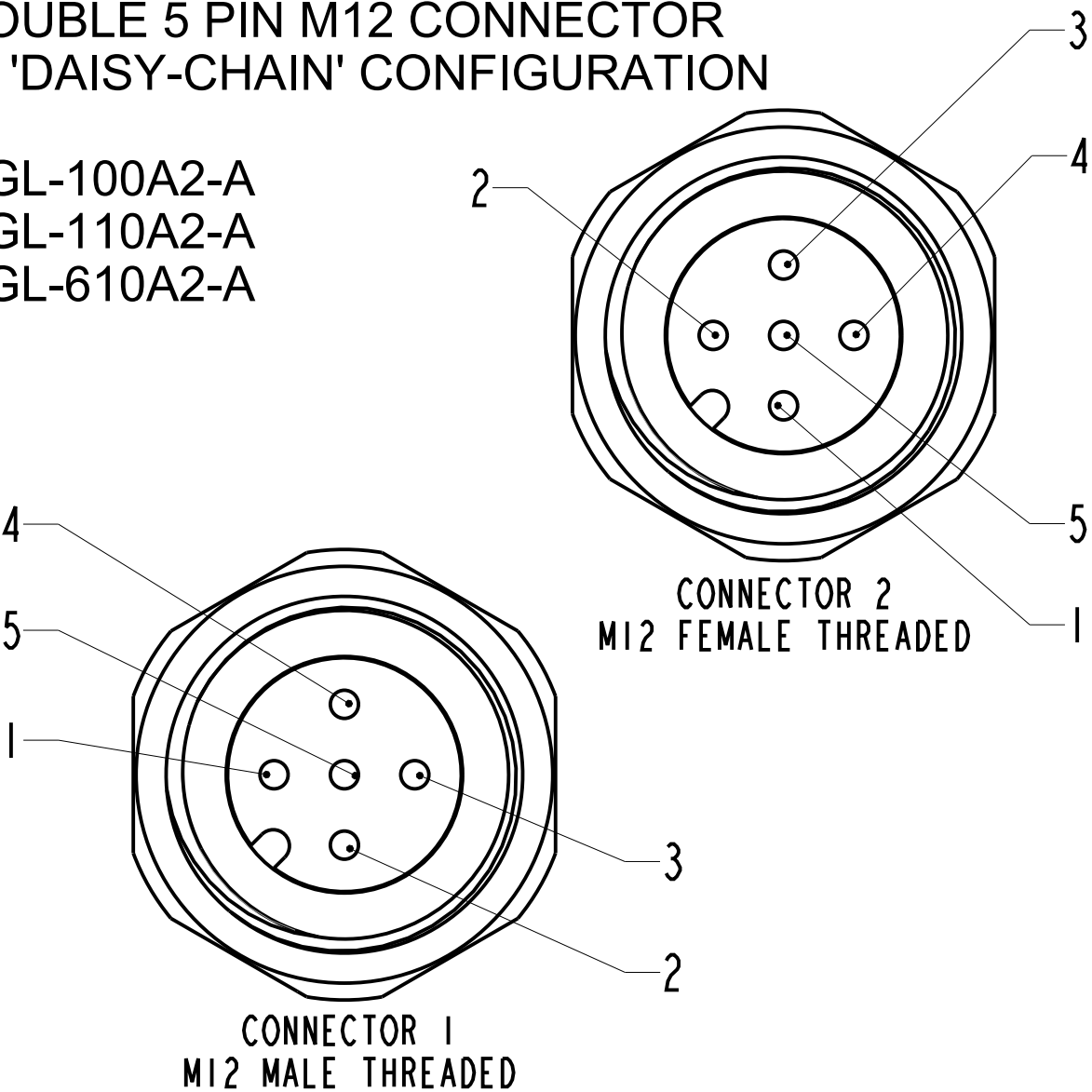
CHECKED BY: Ben Chave

SHEET: 1 OF 2

GENERAL TOLERANCE: $\pm 0.1 / \pm 0.5^\circ$

DOUBLE 5 PIN M12 CONNECTOR
IN 'DAISY-CHAIN' CONFIGURATION

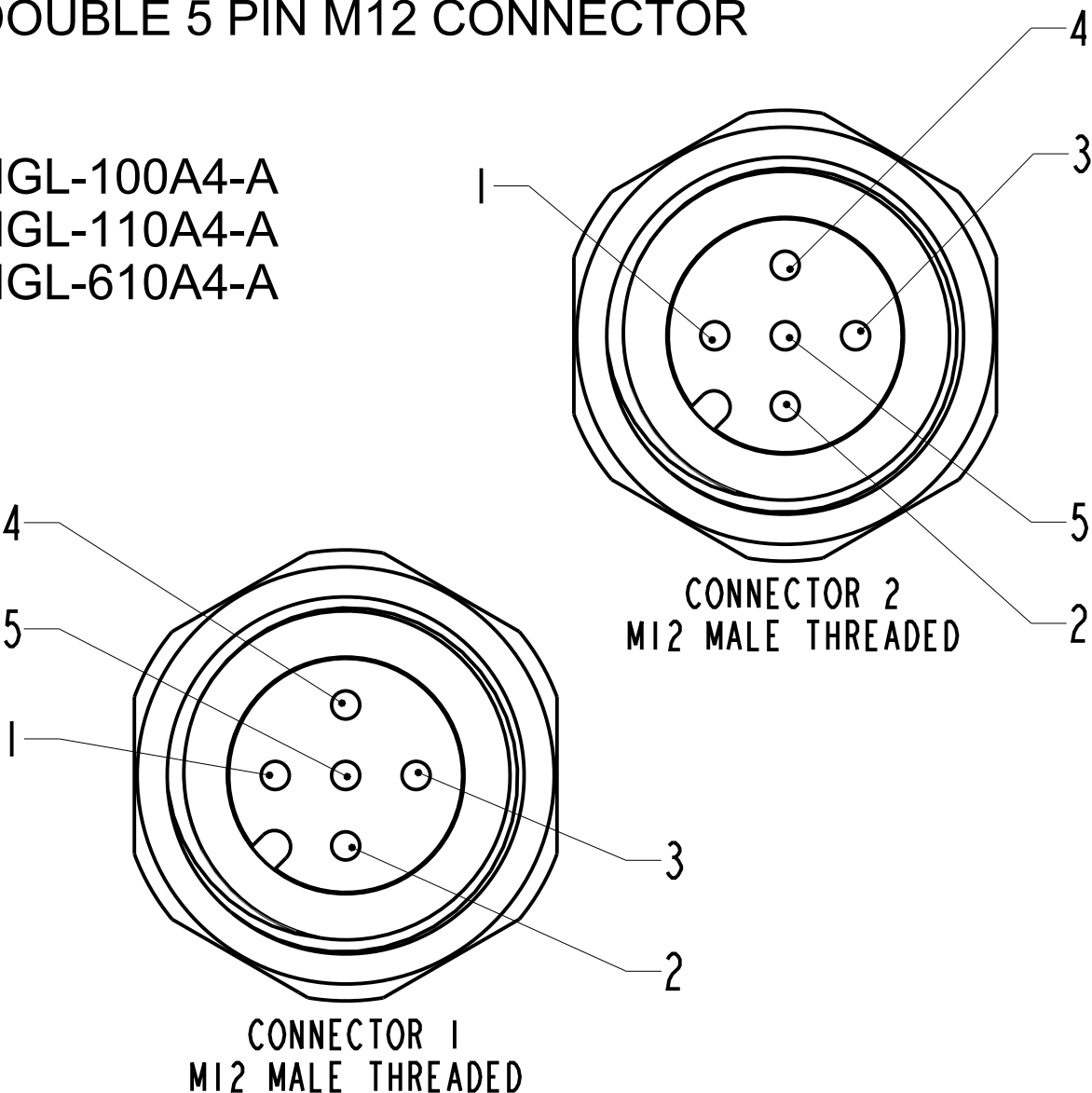
HGL-100A2-A
HGL-110A2-A
HGL-610A2-A



CONNECTOR 1 M12 MALE			CONNECTOR 2 M12 FEMALE		
SIGNAL			SIGNAL		
CONNECTOR 1 M12 MALE	PIN 1	24V	CONNECTOR 2 M12 FEMALE	PIN 1	24V
	PIN 2	OUTPUT 1		PIN 2	INPUT 1
	PIN 3	0V		PIN 3	0V
	PIN 4	OUTPUT 2		PIN 4	INPUT 2
	PIN 5	SOLENOID DRIVE		PIN 5	SOLENOID DRIVE

DOUBLE 5 PIN M12 CONNECTOR

HGL-100A4-A
HGL-110A4-A
HGL-610A4-A



CONNECTOR 1 M12 MALE			CONNECTOR 2 M12 MALE		
SIGNAL			SIGNAL		
CONNECTOR 1 M12 MALE	PIN 1	24V	CONNECTOR 2 M12 MALE	PIN 1	
	PIN 2	OUTPUT 1		PIN 2	
	PIN 3	0V		PIN 3	0V
	PIN 4	OUTPUT 2		PIN 4	SOLENOID DRIVE
	PIN 5			PIN 5	