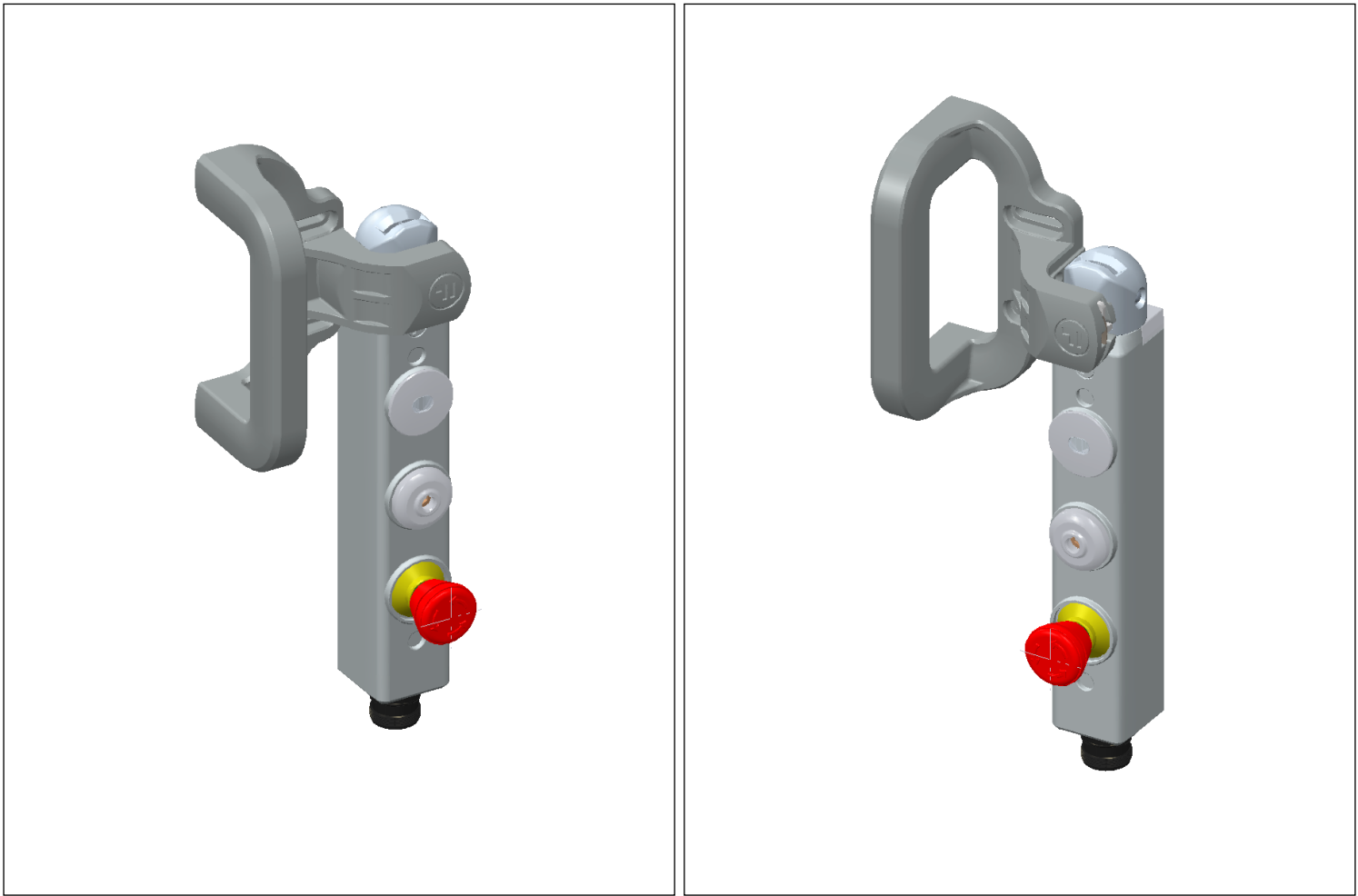


Datasheet for THHSMDEUCQ5



Breakdown List

Item number: ITM-00093341	
Part	Description
THH	Head module including hinged actuator
TSMDU	Power to Unlock - head & solenoid safety in serie
TEC	Twist Reset, series wiring
TQ5	12 Pin M23 QD Safety & Control

Datasheet for THHSMDEUCQ5

Technical Specification

tGard offers "a customised safety solution, as standard" and is defined by a range of tGard elements, including selector switches, safety switches(solenoid and non solenoid), personnel keys(safety keys), emergency release, push buttons, estops, indicator lamps and a choice of operating handles for both hinged and sliding guard doors. These elements are simply selected and then assembled into a robust housing, suitable for mounting onto machine guarding, providing the user with an exact configuration specific to the application.

tGard is quick and easy to install and can be mounted directly onto a flat surface, doors or extruded aluminium profiles without the need for mounting plates or brackets. It is IP65 as standard and has been designed to be fully compliant with the new machinery safety standards.

Technical Specification

Housing Materials	THH	Painted die cast zinc alloy
	TSMDU	Painted die cast aluminium
	TEC	
Contact Material	TSMDU	Silver
Colour	THH	Dark Grey
	TSMDU	
	TEC	Red
Ambient Temperature	-25°C to 40°C (-13°F to 104°F)	
Environment	THH	Indoor
	TSMDU	
	TEC	
	TQ5	
Ingress Protection	THH	IP65****
	TSMDU	
	TEC	
	TQ5	
Retention Force	THH	2500N
	TSMDU	2500N(locked)
Operating Force	THH	5N to 10N
Mechanical Life	THH	1,000,000 Operations
	TSMDU	
Maximum Frequency of Operations	THH	1 per second
	TSMDU	
Solenoid Rating	TSMDU	350mA max @ 24VDC
Voltage	TQ5	24V DC
Switches Conformance	TEC	IEC 60947-5-1
Safety Switch Type	TSMDU	DC13: Le=0.5A, Ue=24V DC AC15: Le=1A, Ue=24V AC
Monitoring Switches	TSMDU	DC13: Le=0.5A, Ue=24V DC
Min hinged door radius	THH	150mm (using TAH actuator handle)
Electrical Life	TSMDU	1,000,000 Operations
Switching Principle	TEC	Positive Break
Switching Current	TEC	1mA MIN / 100mA MAX
Switching Voltage	TEC	24V
Max current on power supply	TQ5	0.75A

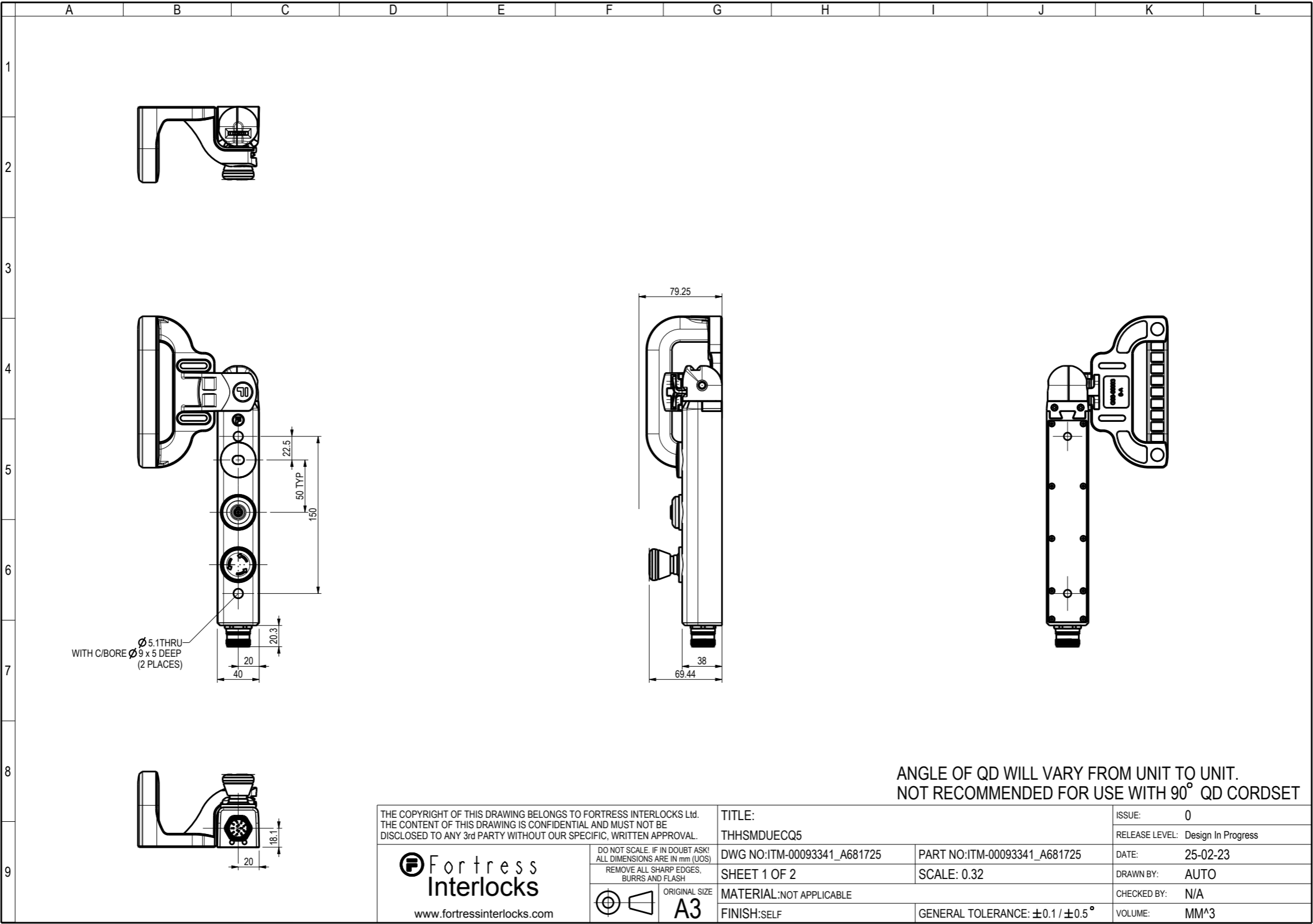
**** IP protection is to the tGard stack that this module attaches to, when correctly fitted according to installation and

Datasheet for THHSMDUECQ5

maintenance instructions.

Datasheet for THHSMUECQ5

Full Dimentional Drawing



Datasheet for THHSMDUECQ5

	A	B	C	D	E	F	G	H	I	J	K	L									
1																					
2																					
	Item		THHSMDUECQ5																		
3																					
	HEAD	1	2	3	4	5	6	7	8	9	10	Base									
	THH	SM	DU	EC								Q5									
4		Input	Output	2nd Output	SC1 in	SC2 in	SC1 out	SC2 out	SC3 in	SC4 in	SC3 out	SC4 out	SC5 in	SC6 in	SC5 out	SC6 out	+24V	0V	Earth		
	TSM	-	9	-	2	4	*****	*****	-	-	-	-	-	-	-	-					
	TDU	7	8	-	*****	*****	*****	*****	-	-	-	-	-	-	-	-					
	TEC	-	-	-	*****	*****	5	6	-	-	-	-	-	-	-	-					
	-	-	-	-	-	-	-	-	-	-	-	-	-	-	-	-					
	-	-	-	-	-	-	-	-	-	-	-	-	-	-	-	-					
5	-	-	-	-	-	-	-	-	-	-	-	-	-	-	-	-					
	-	-	-	-	-	-	-	-	-	-	-	-	-	-	-	-					
	-	-	-	-	-	-	-	-	-	-	-	-	-	-	-	-					
	-	-	-	-	-	-	-	-	-	-	-	-	-	-	-	-					
	-	-	-	-	-	-	-	-	-	-	-	-	-	-	-	-					
6	TQ5																1	3	12		
	Note: 2nd Output = Anti Clock turn on 3 Pos. Switch																				
	Note: ***** denotes safety element is wired in series to other safety elements																				
7																					
8																					
9																					
													THE COPYRIGHT OF THIS DRAWING BELONGS TO FORTRESS INTERLOCKS Ltd. THE CONTENT OF THIS DRAWING IS CONFIDENTIAL AND MUST NOT BE DISCLOSED TO ANY 3rd PARTY WITHOUT OUR SPECIFIC, WRITTEN APPROVAL.						TITLE: WIRING TABLE FOR THHSMDUECQ5	ISSUE: 0	
													DO NOT SCALE. IF IN DOUBT ASK! ALL DIMENSIONS ARE IN mm (UOS)						DWG NO:ITM-00093341_A681725	PART NO:ITM-00093341_A681725	RELEASE LEVEL: Design In Progress
													REMOVE ALL SHARP EDGES, BURRS AND FLASH						SHEET 2 OF 2	SCALE: 0.32	DATE: 25-02-23
													ORIGINAL SIZE A3						MATERIAL:NOT APPLICABLE	SCALE: 0.32	DRAWN BY: AUTO
													FINISH:SELF						GENERAL TOLERANCE: ±0.1 / ±0.5°	CHECKED BY: N/A	
													VOLUME: 0.000 MM^3								